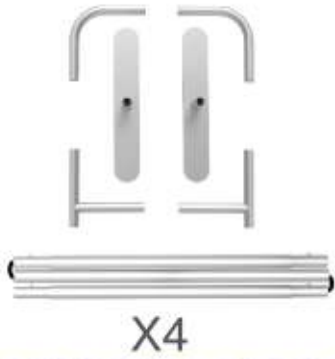


PARTS

(1) Hardware

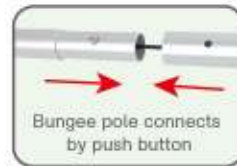
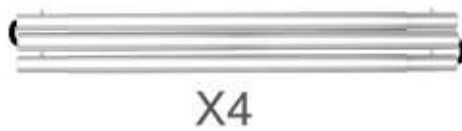


(2) Graphic printing fabric banner



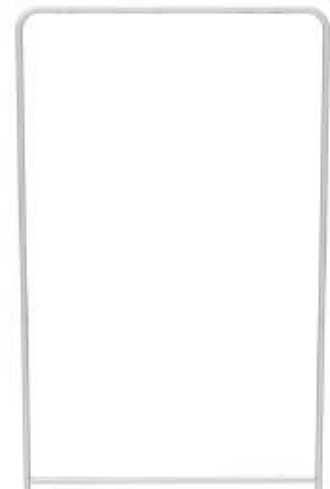
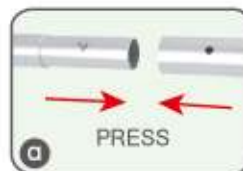
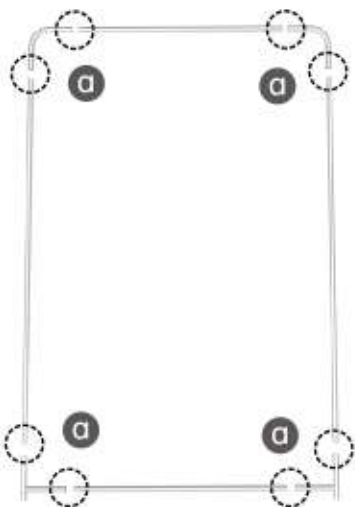
STEP 01

To connect the poles according to the labellings



STEP 02

Connect the support poles.



PARTS

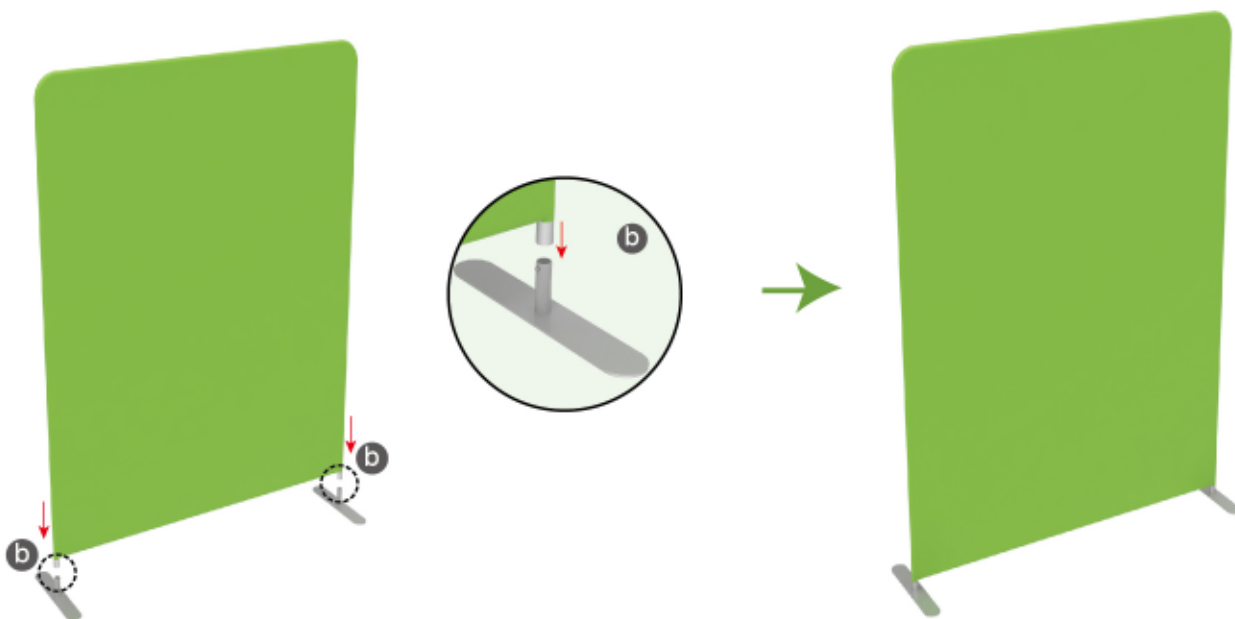
STEP 03

To slide the fabric banner on the frame from top and zip up at bottom



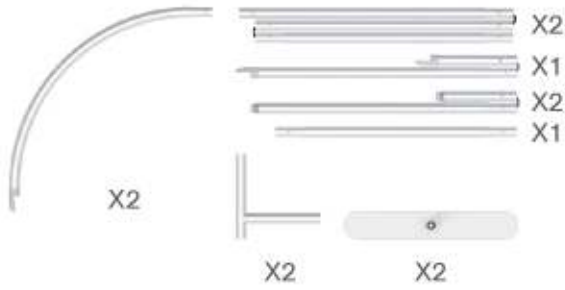
STEP 04

To assemble the stand feet in position



PARTS

(1) Hardware

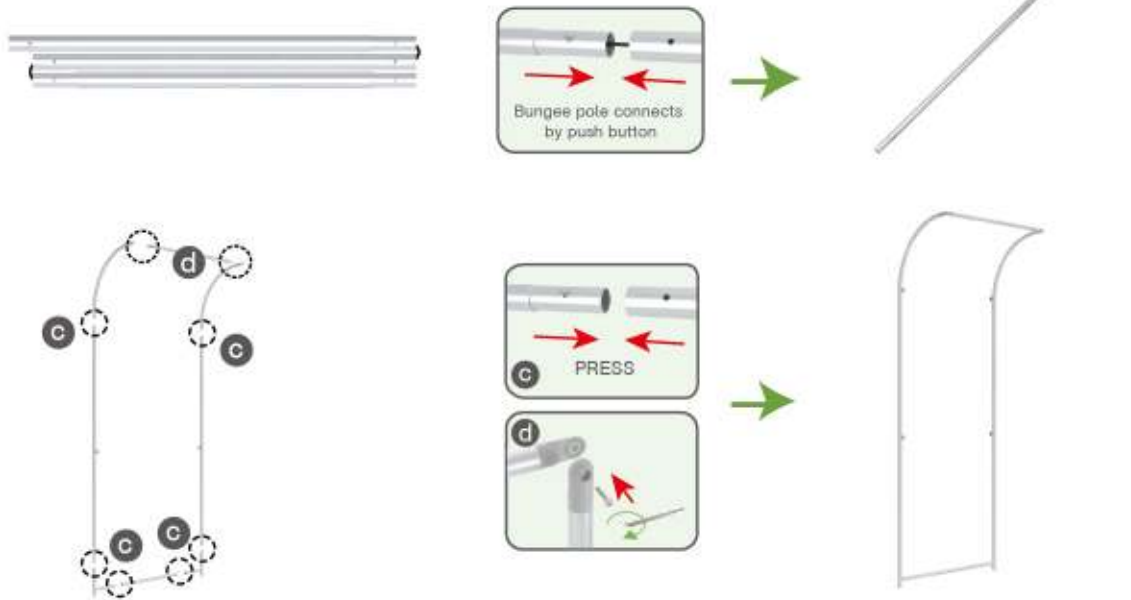


(2) Graphic printing fabric banner



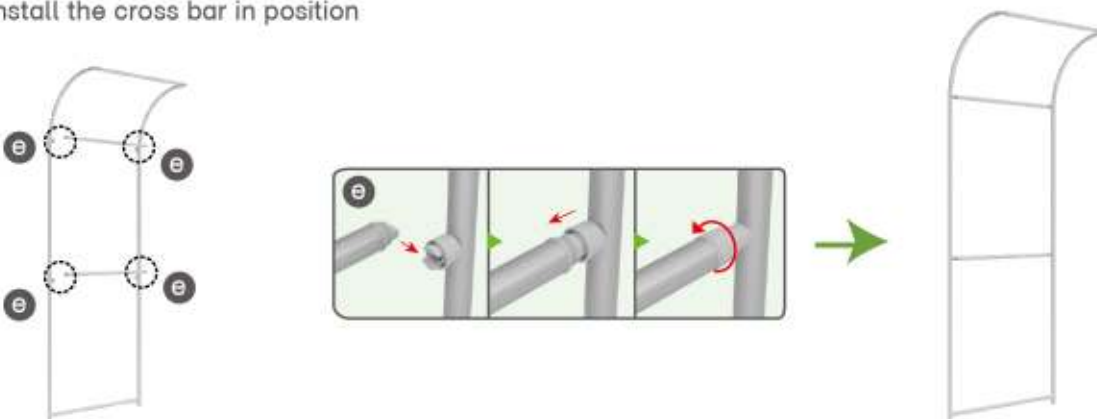
STEP 01

To connect the poles according to the labellings



STEP 02

To install the cross bar in position



PARTS

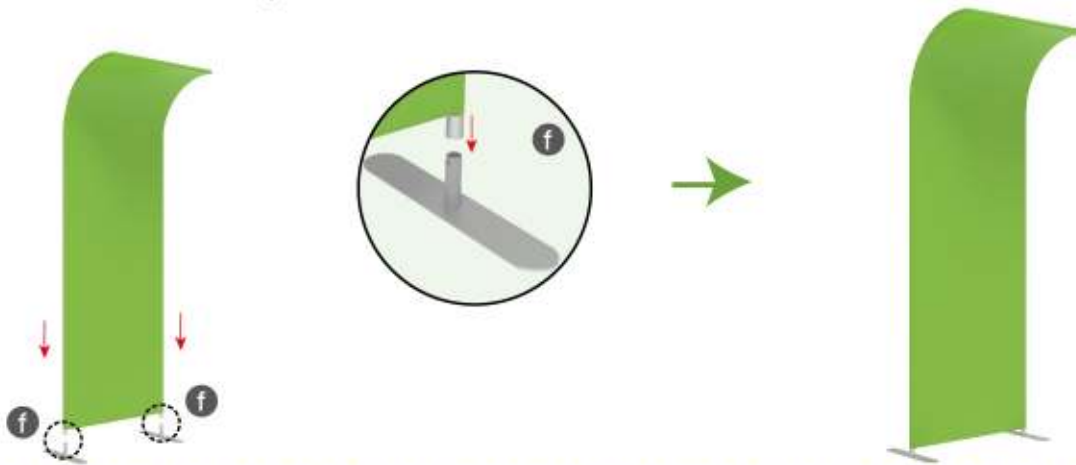
STEP 03

To slide over the fabric banner from top to bottom and zip up



STEP 04

To assemble the stand feet in position



PARTS

(1) Hardware

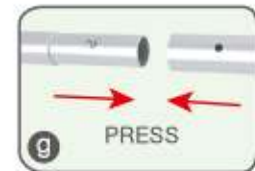
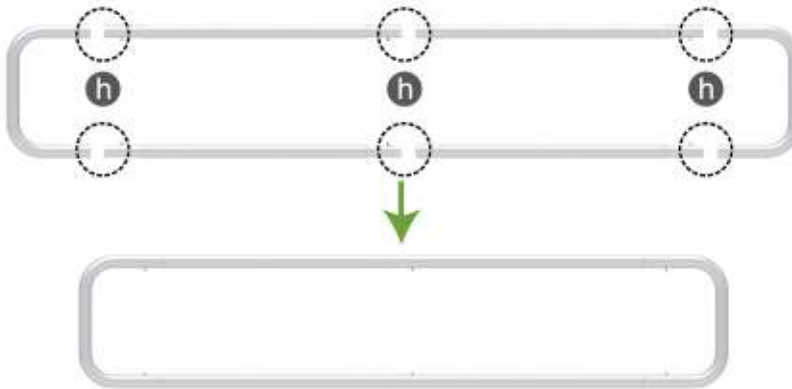


(2) Graphic printing fabric banner



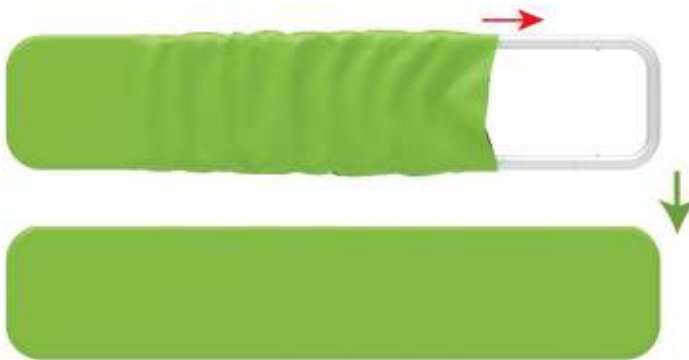
STEP 01

To connect the poles according to the labellings



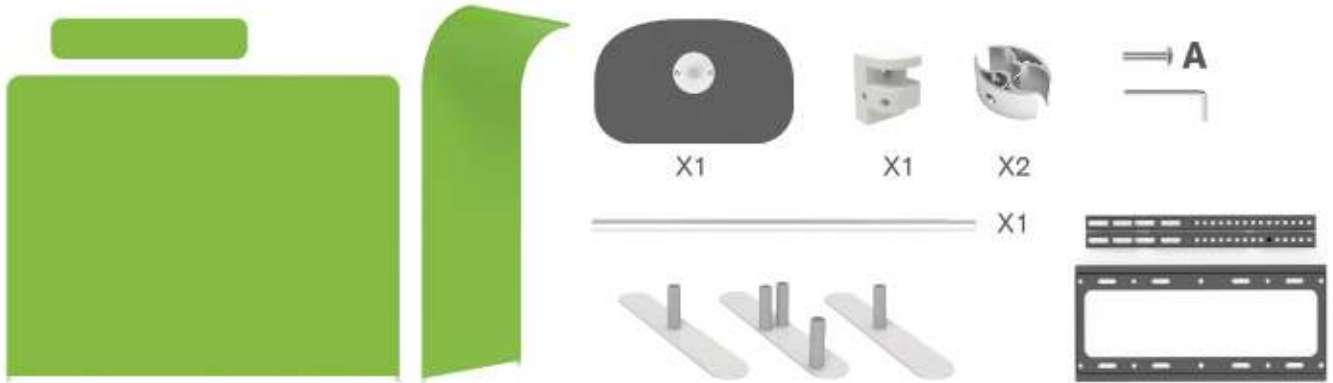
STEP 02

To slide the fabric banner on the frame from side and zip up at side



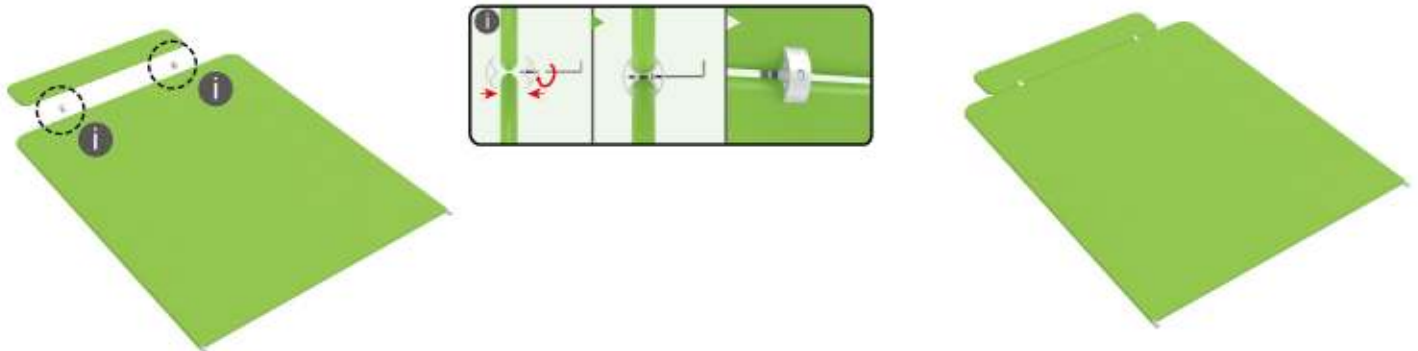
PARTS

Booth Set Assembly



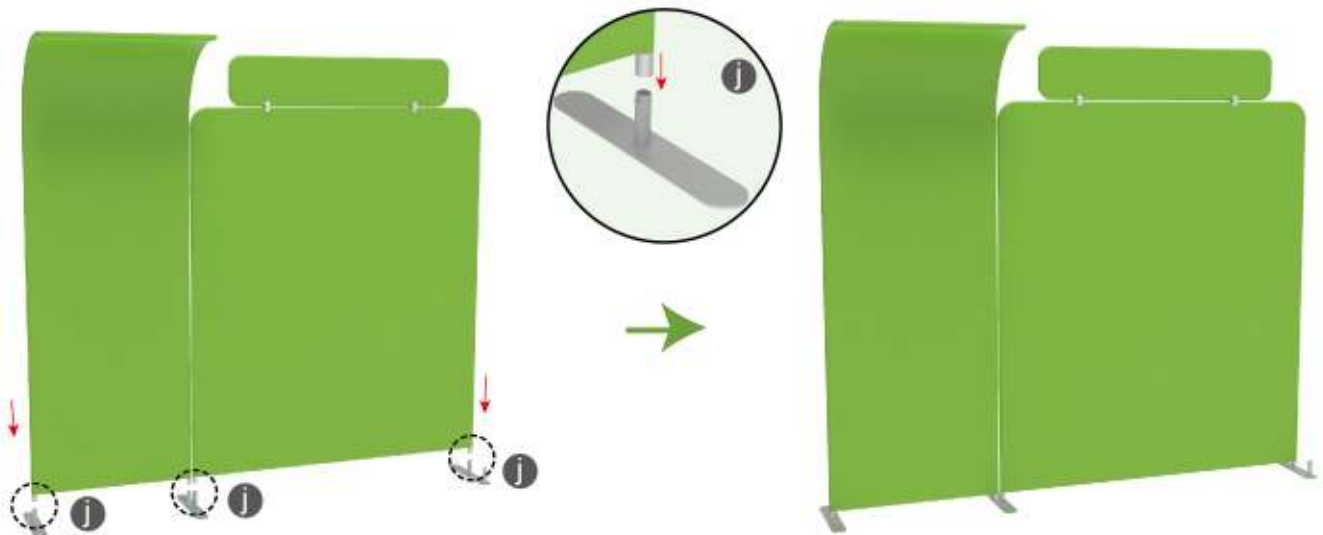
STEP 01

Lie down the back wall and install the header by using C clip



STEP 02

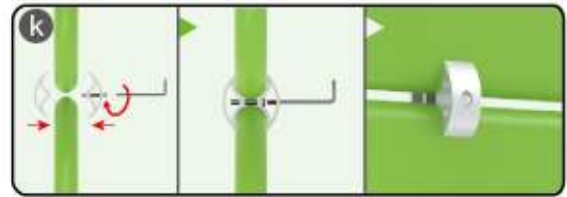
To install the backwall base in position to make the backwall stands together



PARTS

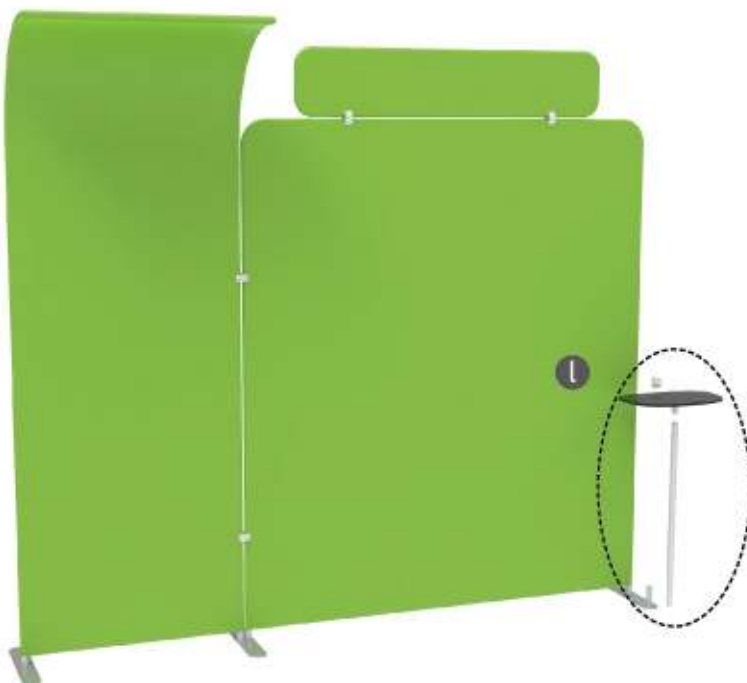
STEP 03

To use C clip to make 2 backwalls connect perfectly



STEP 04

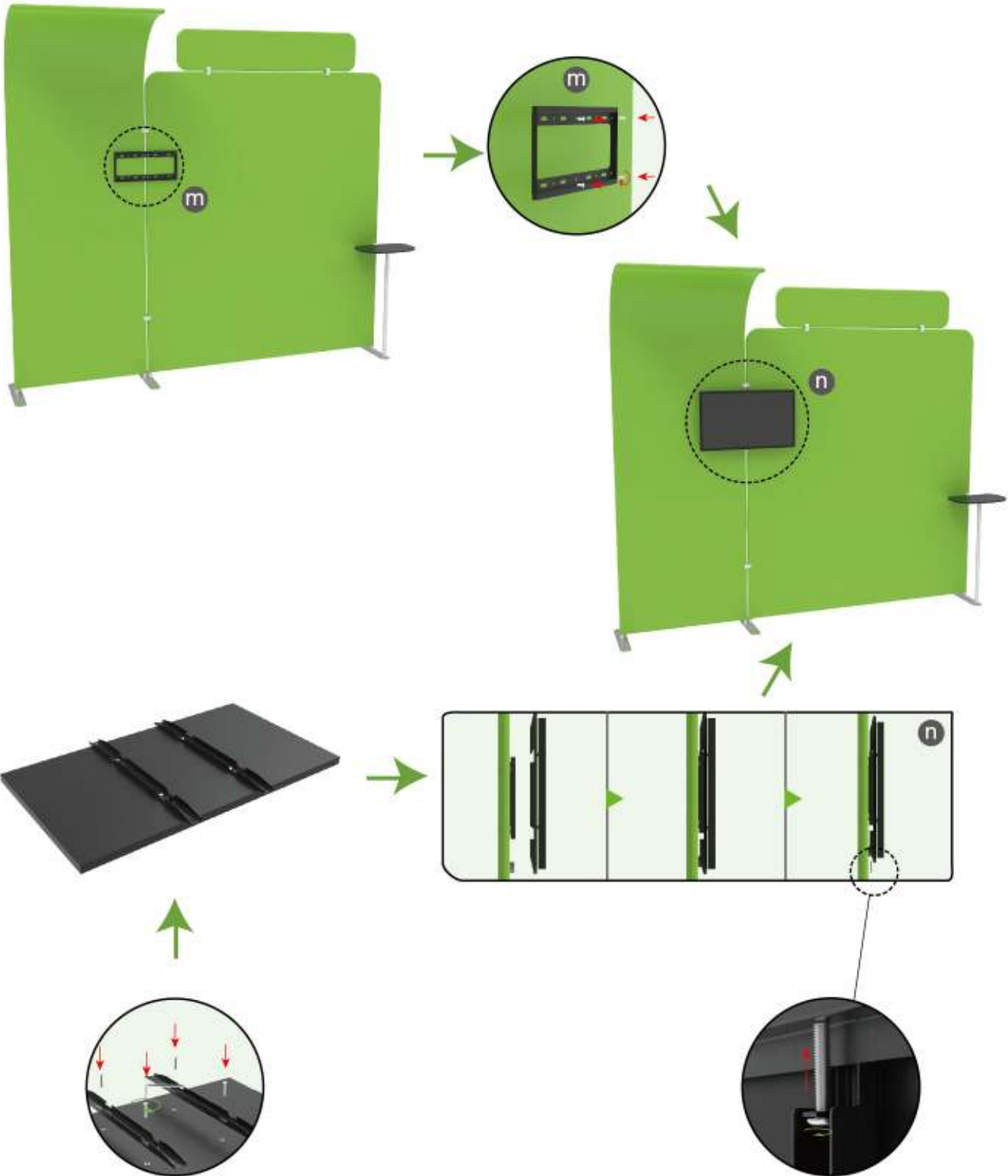
To install the shelf in position



PARTS

STEP 05

To install the TV mount in position



PARTS

STEP 06

Install LED light



10X10ft-Booth-16