

### PARTS

(1) Hardware



(2) Graphic printing fabric banner

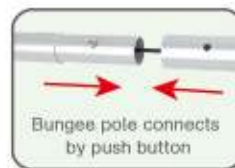
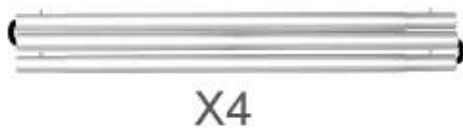


(3) LED Light Light Clips



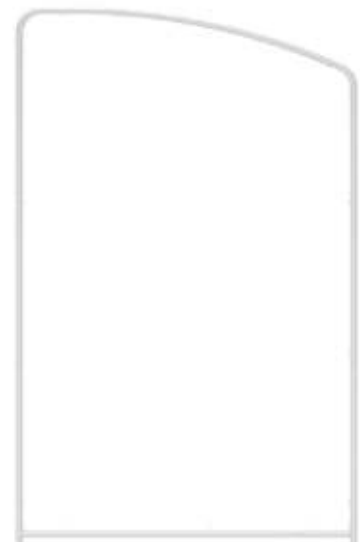
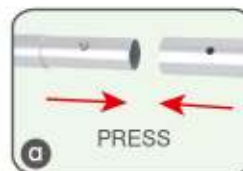
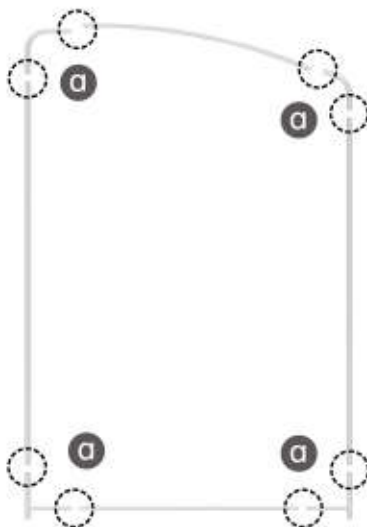
### STEP 01

To connect the poles according to the labellings



### STEP 02

To use corner pieces to connect the poles to be display stand



## PARTS

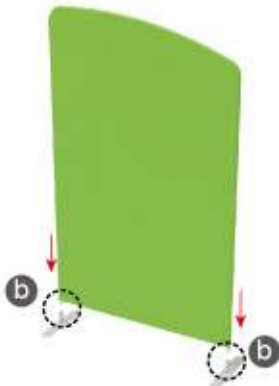
## STEP 03

To slide the fabric banner on the frame from top and zip up at bottom



## STEP 04

To assemble the stand feet in position



## STEP 05

Install LED light



To repeat the assembly steps to install another display stand



### PARTS

(1) Booth Set

C clip x 2  
Clamp x 1

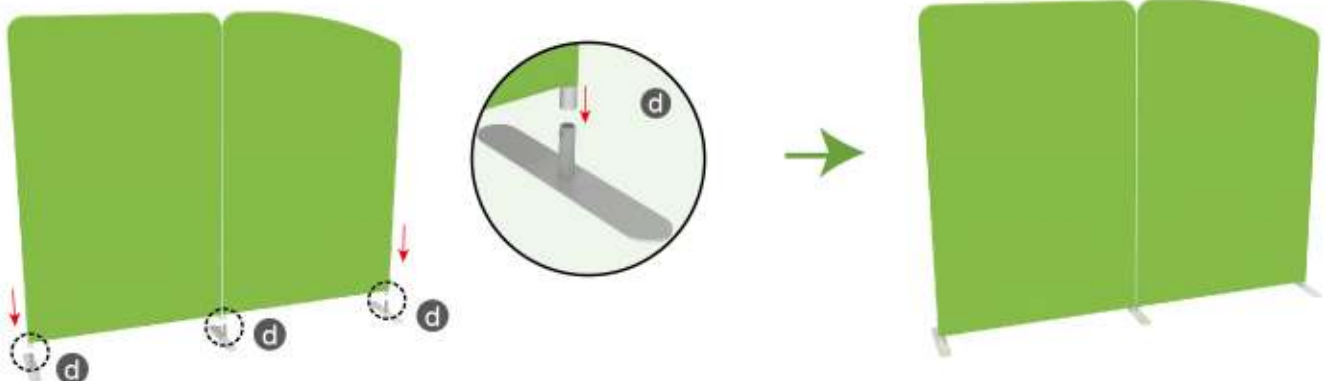
1x shelf  
1x Upright pole  
for shelf

1x TV mount and screw bag  
1x Allen Key



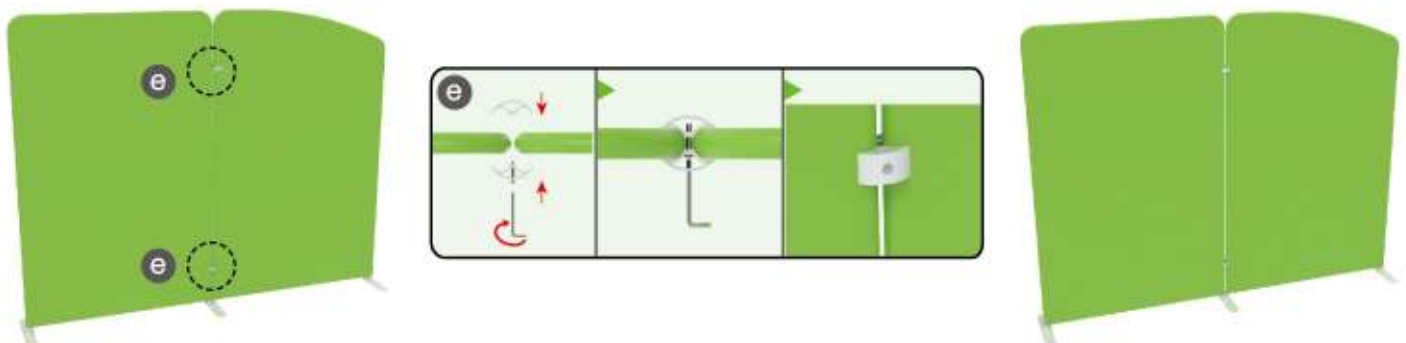
#### STEP 01

To assemble the stand feet in position



#### STEP 02

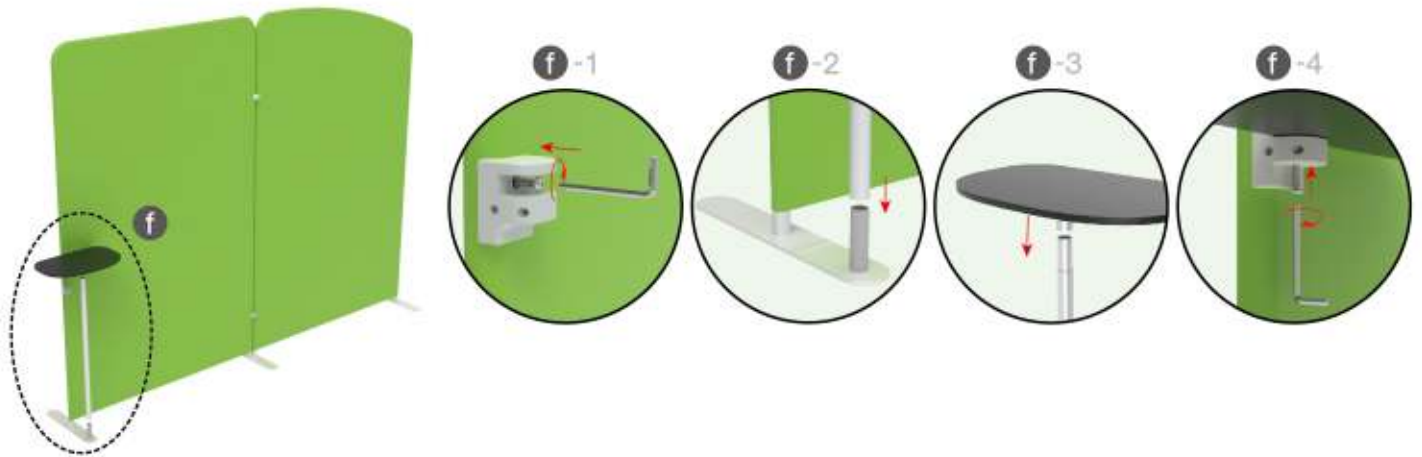
To use C clip to connect 2 display stand perfectly



### PARTS

#### STEP 03

To install the shelf in position



#### STEP 04

To install the TV mount in position

